



FLOOR HINGE 3368 WITH PATCH FITTING

BSI 3368

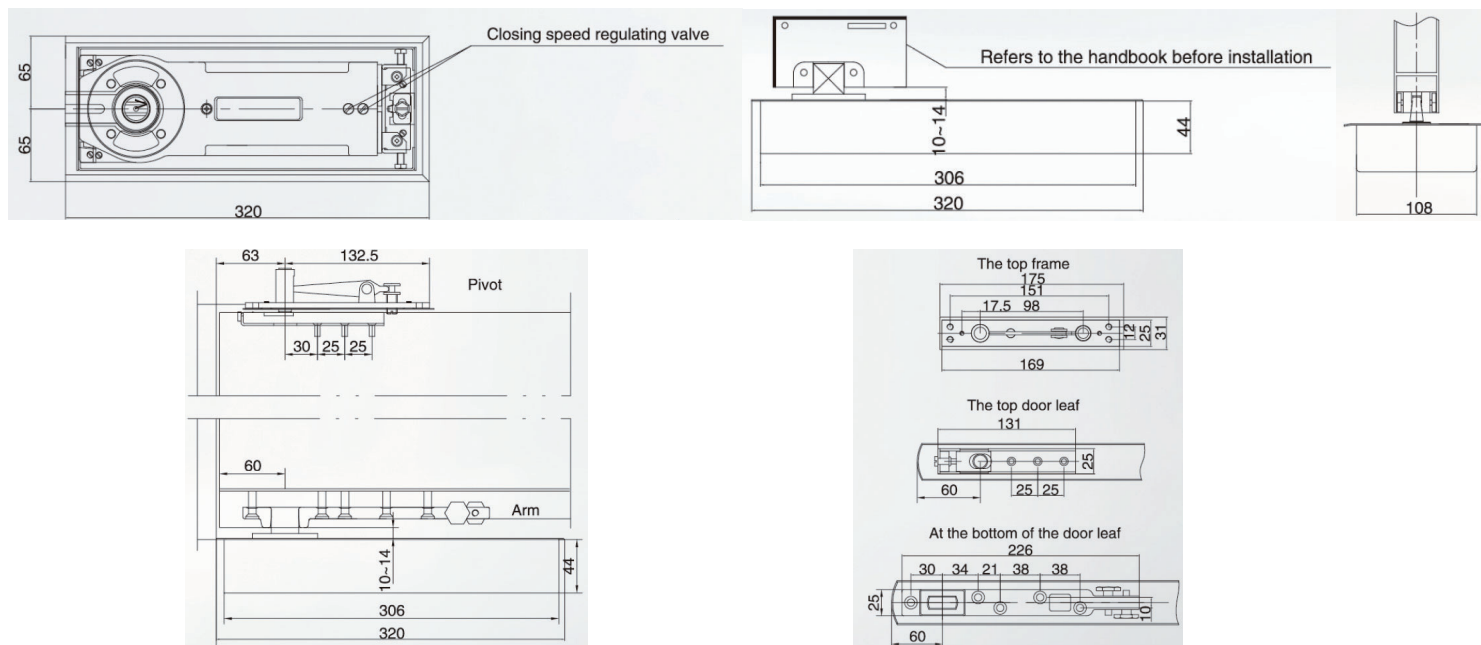

FEATURES:

- Ultra-thin body design reduces floor drilling depth, making installation more efficient.
- Premium 304 stainless steel cover with rounded flap design - safe, dust-resistant, rust-proof, and enhanced for durability with better anti-step performance.
- Innovative all-round adjustment feature ensures easy and precise installation.
- Integrated pressure relief valve prevents spring damage and oil leakage from external impacts or strong wind during door operation.
- High-performance, low-temperature-resistant hydraulic oil ensures reliable operation even in extreme conditions down to -40°C.

Life	Max door width (mm)	Max capacity (kg)	Closing force (N.m)	Adj. closing speed	Adj. latching speed via valve
500,000 times	1250	150	37~54	90° ~20°	20°~0°
Two-way open	Max open angle	hole open	Horizontal adjustment	Vertical adjustment	
YES	120°	90°	YES	YES	

Dimension:

Unit:mm



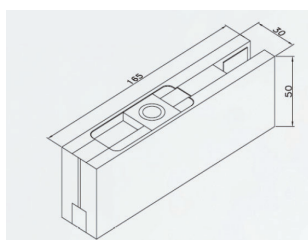


PATCH FITTING for Floor Hinge

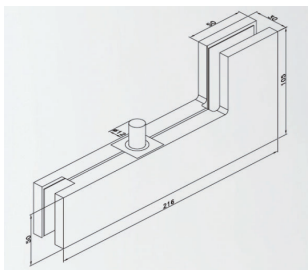
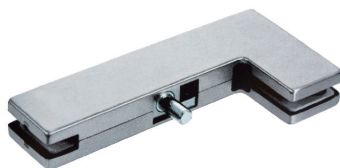
FEATURES:

- Material: Aluminum alloy, Zinc Alloys
- Application: 12mm tempered glass door
- Surface treatment: hairline , mirror surface

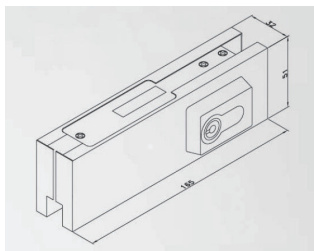
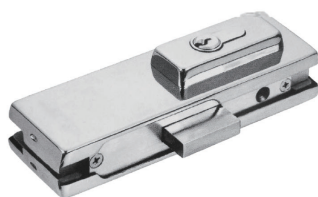
BSI TPF01



BSI TPFL01



BSI BPFC01



BSI BPF01

